

To gain access to our world, you first need to apply to one of our degree programmes. However, before you can apply, you need to know if you meet Stellenbosch University's basic admission requirements.

## START HERE

Our basic admission requirements are as follows:

A National Senior Certificate (NSC) certified by Umalusi for admission to bachelor's degree studies, requiring at least a 65% in each of four school subjects from the list of designated university admission subjects.

Write the National Benchmark Tests (NBTs) AQL required by your chosen degree programme.

## REMEMBER

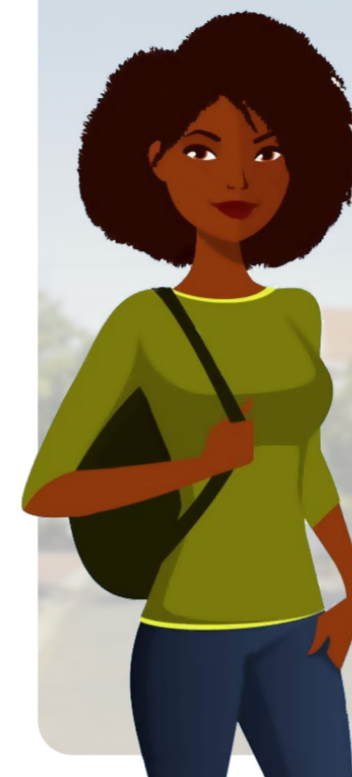
There are also faculty specific and programme specific admission requirements in each faculty. So, while you may qualify for university admission, you still need to meet our faculty and programme requirements to be admitted for a specific degree. For even more detailed information, consult the faculty's Calendar, Part 4 and click on the Arts and Social Sciences block.



So you're interested in the world of arts and social sciences and have settled on either a career as a journalist, translator, politician, teacher, actor, musician or psychologist. But what about the other not so well-known careers out there. Ever considered Philosophy or Information Science for that matter? Or what about studying History as a subject and embarking on a career in the memory business as an advertising consultant, scenario analyst or archivist?

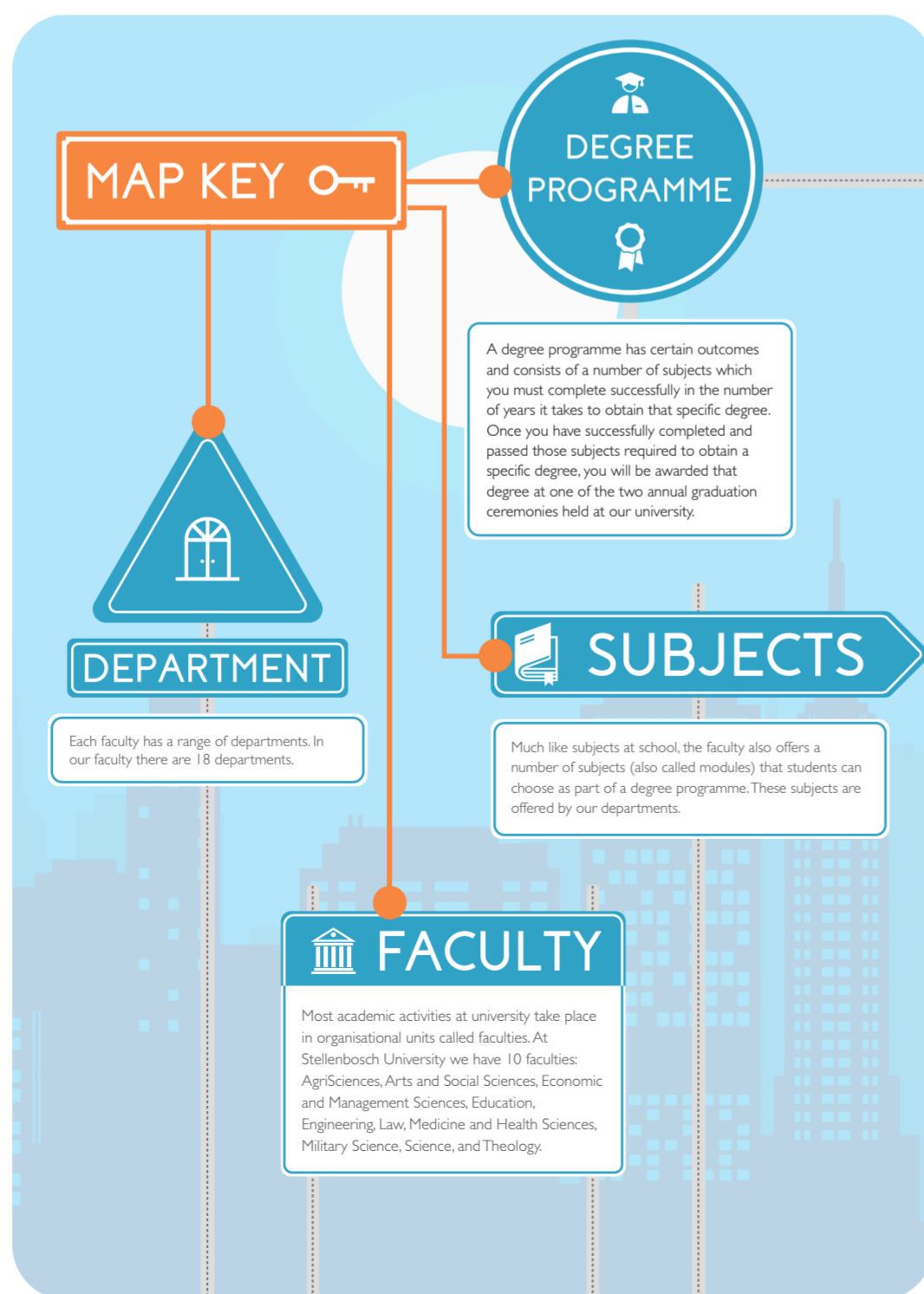


By following this road map you will learn how to navigate a world filled with a range of study and career opportunities in a few easy steps. Grab some water and let's get started on this journey to prepare you for today's competitive labour market.



## TAKE NOTE

Even if you meet the university's minimum requirements, there is no guarantee that you will be accepted for the programme of your choice or even your first choice. This is because we have a limited number of places available in the faculty. So, when you apply for a degree, please list your first and second and even third degree choices on your application. Please note that only first and second choices will be considered while third choices will only be considered if both the first and second choices of programmes are programmes with programme-specific selection procedures.



# ROAD MAP TO THE BA WORLD



## STEP 2

Our faculty consists of 18 departments that are grouped into languages, arts and social sciences. The languages include departments like African Languages, Afrikaans and Dutch, Ancient Studies, English, General Linguistics, and Modern Foreign Languages. The arts include Drama, Music, and Visual Arts while the social sciences include Geography and Environmental Studies, History, Information Science, Journalism, Philosophy, Political Science, Psychology, Social Work, and Sociology and Social Anthropology. Together these departments offer a range of subjects that will make up your degree programme and equip you for the knowledge economy and a workplace that requires graduates with generic thinking, writing and research skills, who are able to work in teams and make a contribution to society through critical, engaged citizenship.

### BUT WHAT EXACTLY ARE DEGREE PROGRAMMES?

A degree programme consists of a group of complementary subjects all related in a meaningful way. Each subject has either a general or a specific career focus.

Thanks to the general scope, you will learn how to think analytically and critically, solve problems and communicate effectively. As a result of the specific focus, you will acquire a package of knowledge and skills that equips you for a career in a particular field or within a group of related fields.

Below is a list of the interesting degree programmes you can follow in our faculty. You can also visit "What can I study?" for more information.

# DEGREE PROGRAMMES

### BA in Development and Environment

Learn about how communities work in interaction with the natural environment through processes of economic and socio-economic development.

### BA in Human Resource Management

The development of human capital is key to economic progress. Human Resource Managers use their knowledge of Industrial Psychology (a major subject) to develop and manage employees.

### BA in International Studies

With training in economic and political issues, and languages such as French, German and Chinese, this programme is your key to an exciting career in tourism, the media industry, international organisations, the business world or the Department of International Relations and Cooperation.

### BA in Law

This programme lays the foundation for advanced legal studies while simultaneously providing insight into human behaviour and social issues. It also gives one access to the postgraduate LLB programme.

### BMus

offers specialised training to prepare you as a music teacher, performing artist (soloist, accompanist, orchestral player or conductor), music technologist, musicologist or composer.

### BA in Sport Science

equips you for a career in sport science, sport psychology, health and fitness, movement education, and recreation for people with disabilities, and sport coaching. Completion of this programme enables students to apply for honours studies in Biokinetics, Performance Sport or Kinderkinetics.

### BA in Drama and Theatre Studies

prepares you for a career in the theatre, radio, film and TV industries, as actor, director, scriptwriter, technician, manager, critic, and researcher.

### BA in the Humanities

provides access to a variety of careers by teaching you to think, read and write analytically and critically, identify problems, communicate effectively and respond to changing sociocultural demands and circumstances.

### BA in Language and Culture

prepares you for language- and culture-related occupations such as teaching, the publishing and book industry, journalism and the media, the diplomatic service, tourism, the translation industry, and the music and theatre world.

### BA (Music)

combines training in music with the option of gaining expertise in a language, social science or mathematics and thus provides the ideal foundation for a teaching career, musicology or music journalism.

### BA in Political, Philosophical and Economic Studies (PPE)

This programme develops your skills in critical and creative thinking and equips you with knowledge of political and economic systems. It is aimed at people who are interested in careers in management, the NGO sector, investment banking, research institutes, the civil service, journalism, politics, and academia.

### B in Social Work

prepares you as a professional social worker and enables you to register with the South African Council for Social Service Professions.

### BA in Visual Arts and Design

has a wide range of creative and educational applications and prepares you for careers in the creative industries. The programme has three streams, namely Fine Arts, Visual Communication Design, and Creative Jewellery and Metal Design. The streams make it possible to qualify as fine artist, graphic and visual communication designer, jewellery designer and jewellery manufacturer, and/or art and design theorist.

Remember, some of our programmes have specific admission requirements. It is important to consult the undergraduate [Admission Requirements](#) and the [Calendar](#) (click on the Arts and Social Sciences block for the faculty's Calendar, Part 4) to ensure that you meet those requirements.

Some of our degree programmes also require that you do an audition or submit a portfolio while others have limited space. Below are examples of those programmes.

**Selection for the BMus and BA (Music) degree programmes** is based on an audition and theoretical test, during which candidates must demonstrate proof of the required standards. Upon receiving your application, the Music Department will send you information about the audition.

When applying for the **BA in Drama and Theatre Studies**, you must also complete and submit a [selection form](#) by 30 June and be available for auditions and/or interviews at the Drama Department in Stellenbosch at the beginning of August.

You will be required to complete a questionnaire and a medical history form for the **BA in Sport Science programme** and submit it with your application form. The questionnaire and form can be found [here](#) under the heading Non-Academic Documents We Require.

**For admission to the BA in Visual Arts and Design**, you must submit a prescribed portfolio of artwork by 2 September. Portfolio requirements are available under "[How to apply](#)".

**If you do not have Internet access at all, ask for a print copy of the Calendar at the faculty's Open Day counter (this counter only operates on Open Day) at the entrance to the Arts building. Remember, there are limited copies and these copies are ONLY AVAILABLE to learners who do not have Internet access at all.**



**IF YOU ARE ATTENDING OUR OPEN DAY, PROCEED TO STEP 3, OTHERWISE SKIP AHEAD TO STEP 4.**

## STEP 3

With 18 departments in our faculty there are a range of modules and subjects to choose from to complete your degree. Make sure you visit all the departmental stalls on Open Day and please ask us as many questions as you like. We are here to help you better understand our faculty, departments and this university and to ensure you choose a degree programme that matches your interests, abilities and future career goals.

Understanding the university machinery and the faculty structure can be hard work, so don't forget to stop at our water stations at the entrance to our building on Open Day and replenish your water supply!



**REHYDRATE**



## STEP 4

You can now apply for the degree programme you want to do by:

- visiting [Maties.com](http://Maties.com) and doing an e-application online.
- completing a paper application form, which you can obtain by e-mailing [info@sun.ac.za](mailto:info@sun.ac.za) or phoning 021 808 9111.

### PLEASE KEEP THE FOLLOWING IMPORTANT POINTS IN MIND WHEN YOU APPLY FOR ADMISSION TO STELLENBOSCH:

- Ensure that you have an e-mail address that works and that you use on a daily basis. All future correspondence regarding your application status will be communicated to you via this e-mail address. If you don't have a personal e-mail address, you can create one at [www.gmail.com](http://www.gmail.com).
- After completing the first part of the electronic application, you will receive a student number and password that can be accessed through a link that is sent to you via sms or e-mail.
- You must click on this link first in order to proceed with the rest of your electronic application. Once you have clicked on the link, you will be asked to type in your student number and password to gain access to your application again and complete it.
- Ensure that you have all required documents (Grade 11 end-of-year report, your ID number as well as your parent/guardian's ID number, personal details of the person responsible for your fees account, etc.) on hand before you start the application process.
- Complete ALL the blocks on the electronic form. If you don't do this, your application will not be processed.
- Our electronic application forms also have a range of drop-down menus, so please make sure that when you apply that you click on ALL those drop-down menus and select the answer which applies to you.
- You MUST make three degree programme choices when applying to study in our faculty. The reason for this is to ensure that if you are not accepted for your first choice that there is still a chance to be accepted for your second or third choice.
- It is important to indicate on your application form whether or not you require a bursary and/or university accommodation, so do not forget to tick the correct boxes for this.
- You can only apply for a bursary once you have received a letter from the university that you have been accepted as a student at the university.



Upon applying for admission to the university, you will receive a unique student number. Please use this number in ALL correspondence with the university.

## FREQUENTLY ASKED QUESTIONS

Once I have completed an undergraduate degree in Psychology, can I immediately start practising as a psychologist?

No, it takes at least seven years to qualify as a psychologist. In that time, you will have to complete an Honours degree in Psychology, a Master's degree in Clinical Psychology, an internship at a registered institution, write and pass the Board exam of the Health Professions Council of South Africa and be accepted by the council for registration.

How soon after applying for admission to a degree programme can I expect an answer from the university?

It should take about a month before you receive an answer from the university, so please check your mailbox on a daily basis for feedback. If, for instance, you have not submitted all the documents that need to accompany your application, the university will contact you to request those documents and will only process your application once those documents have been received.

In what language will my classes and class notes be?

During each lecture, all information is conveyed at least in English and summaries or emphasis on content are also given in Afrikaans. Questions in Afrikaans and English are, at the least, answered in the language of the question. Students are supported in Afrikaans and English during a combination of appropriate, facilitated learning opportunities (eg. consultations during office hours, or scheduled tutorials and practicals). For first-year modules, Stellenbosch University makes simultaneous interpreting available during each lecture.

I am a first generation student and also come from a disadvantaged school. What kind of support is available to help me adjust to academic life?

Academic support is offered to students who need it. Generic academic support is provided by the Centre for Student Counselling and Development (study skills, time management and exam stress workshops) while the Language Centre provides language and writing support. Academic departments offer small group tutorials to help students with subject-specific content. A limited number of students who conform to very specific socio-economic admission requirements may qualify for the Extended Degree Programme (EDP). In the EDP students do their first academic year over two years with additional academic support subjects.

What if the programme I have chosen (or been accepted for) doesn't work for me? Can I change the programme/subjects once lectures start?

Yes, you can! As long as you stay in the same faculty, as long as you change your programme within the first two weeks of the first term, and as long as you do not change to a programme with specific admission requirements such as Drama, Music or Visual Arts.

What is the difference between a BA Law degree and a LLB degree?

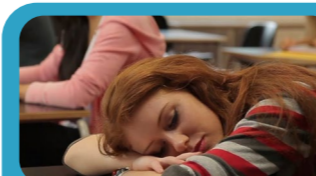
The BA Law degree allows you to obtain a "double major" (a major is the main subject you are studying in your degree programme), namely in law and in another field, for example Psychology. After obtaining a BA Law degree, a student who wishes to pursue an Honours degree, can do so in the non-law major. However, if you wish to practise as an attorney or advocate, you must have a LLB degree. You can obtain the LLB degree by either following the 4-year LLB degree or first completing a 3-year BA Law degree and thereafter completing a 2-year LLB degree. Students that have completed either the 4-year LLB or the BA (Law) together with the 2-year LLB, will have completed exactly the same law modules in 4 or 5 years respectively.



**BE AWARE**



**HAVE A LOOK HERE**



### DON'T BE CAUGHT SLEEPING!

30 June: Applications for all other programmes except the MB, ChB programme as well as accommodation in the university's residences close on this day. [Click here for assistance](#) or contact our Client Services Centre at 021 808 9111.